

NEVYM Neighborhood Exploration Vehicle – Production Series Y, Modular
Length: 51m, Width: 30m, Price: 110MCr (including 10% discount)

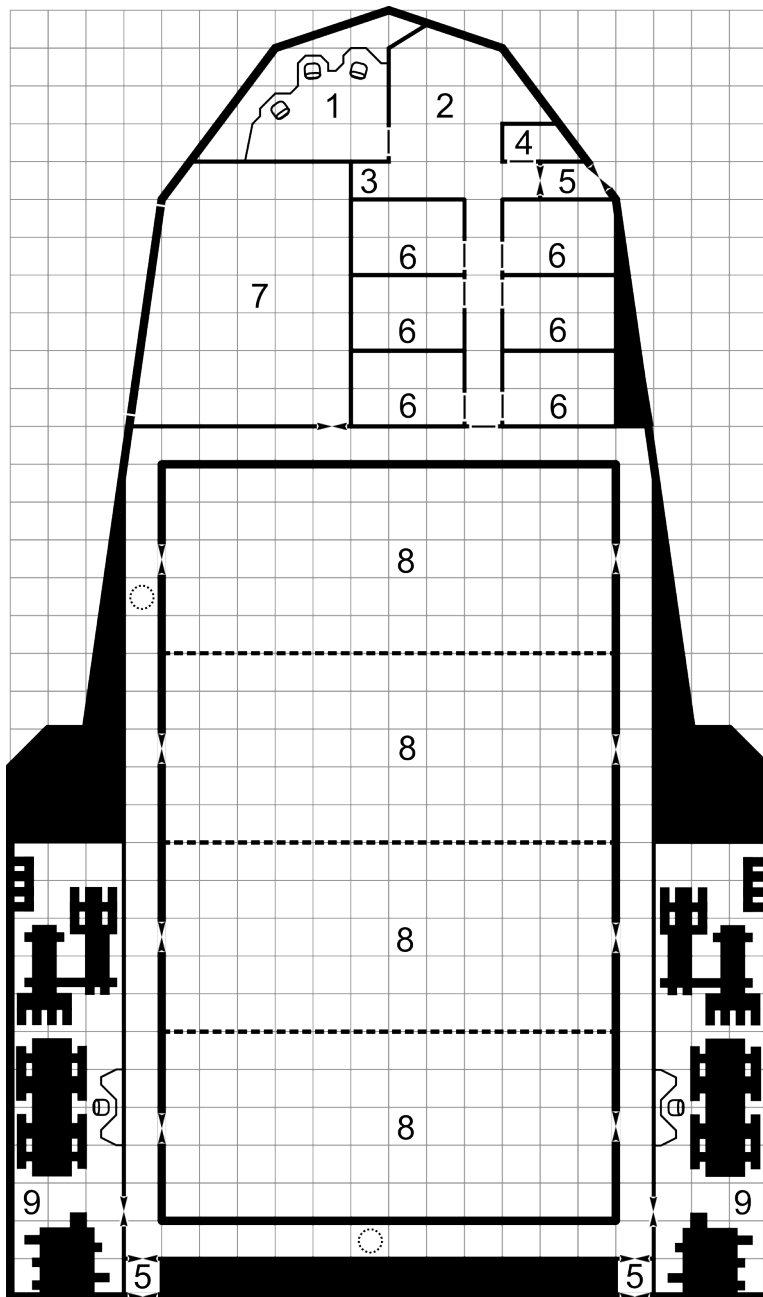
The NEVYM was designed for the University of Regina (Regina, Regina Subsector) and built by the small shipyard Starke&Wendt (Porozly, Rhylanor Subsector). In the years 940 to 982, a total of 35 NEVYMs were built. Most were bought by private companies and research institutes, eight were issued to the University of Regina, six to the IISS.

The NEVYM is not designed for long expeditions to the fringes of space. Its purpose is to explore the immediate surrounding from a central basis. The modular design makes it possible to cheaply refit it for different mission profiles. Common, commercial modules can be used, like the ones used for the Modular Cutter. The NEVYM has a characteristic landing gear with long legs, which makes it possible to change modules without helping infrastructure, for example, to place or pick up research modules on the surface of a planet. This only takes a few hours.

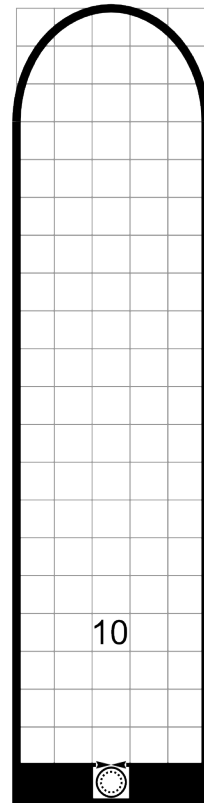
To cut costs, the design resorts to standard components. It uses the classical hull of the Free Trader, only increase its size by 50%. The power plant and drives are replaced by the more powerful ones used in the Subsidized Merchant to increase its range to Jump-2. The cargo area is refitted with four module sockets, the passenger attic makes place for a Modular Cutter. The remaining cargo space and fuel tanks are undersized on purpose and can be complemented by appropriate modules if needed. Including the module socket in the Modular Cutter, the NEVYM can freely configure 50% of its hull volume, which makes it the most flexible exploration vehicle of its size.

NEVYM			Tons	Price (Cr.)
Hull	300 tons Streamlined 40% modular*	Hull 6 Structure 6		18.000.000
Armour	Crystal Iron	4 Points	15	2.400.000
Jump Drive C		Jump 2	20	30.000.000
Manoeuvre Drive C		Thrust 2	5	12.000.000
Power Plant C			10	24.000.000
Bridge			20	1.500.000
Computer	Model 2	Rating 10		160.000
Elektronics	Standard	-4 DM		
Weapons	Hardpoint #1	Double turret (Beam laser / Beam laser)	1	2.500.000
Fuel	12 tons	Four weeks of operation	12	
Cargo	18 tons		18	
6 Staterooms			24	3.000.000
Extras	Fuel Scoops			
	Fuel Processors	40 tons/day	2	100.000
	Ship's Locker			
	6 Escape Pods	One for every stateroom	3	600.000
	Modular Cutter		50	28.000.000
	4 module sockets for 30t modules, price included in hull price			
	4 30t-Module	Not included in price	120	
Software	Jump Control/2			200.000
	Manoeuvre/0			
	Library/0			
Maintenance Cost (monthly)				10.205
Life Support Cost (monthly)				12.000
Total Tonnage and Cost			300	122.460.000

(* from Traveller Book 2: High Guard)



- 1 Bridge
- 2 Common Area
- 3 Galley
- 4 Ship's Locker
- 5 Air Lock
- 6 Stateroom
- 7 Cargo Bay
- 8 Module Socket
- 9 Engineering
- 10 Modular Cutter



The hatch in the ceiling of the port corridor leads to a crawling tunnel to the cockpit of the cutter

Sample Modules:

Cargo Module, 100.000Cr

30t cargo bay, cargo elevator

Fuel Module, 100.000Cr

Holds 30t of fuel. Each fuel module enables the NEVYM to a Jump-1, or a Jump-2 if two modules are used. All four module sockets are equipped with fuel connections, to give the NEVYM a maximum range of two Jump-2. A fuel module in the Cutter can't be used for jumps directly, the fuel there must be pumped over to the NEVYM first.

Passenger Module 3.700.000Cr

Passenger Module			tons	Price (Cr.)
Hull	30 tons			100.000
6 Staterooms			24	3.000.000
Extras	6 Escape Pods	One for every stateroom	3	600.000
Cargo	3 tons		3	
Maintenance Cost (monthly)				308
Life Support Cost (monthly)				12.000
Total Tonnage and Cost			30	3.700.000

Sensor Module 21.600.000Cr

Sensor Module			Tonnen	Preis (Cr.)
Hull	30 tons			100.000
Elektronics	Survey Sensors*	+1 DM, reduce scan time by one step	10	10.000.000
3 Staterooms			12	1.500.000
Extras	Enhanced Signal Processing*	+4 DM, +2 Range Band	2	8.000.000
	Laboratory*		4	1.000.000
	10 Probe Drones		2	1.000.000
Maintenance Cost (monthly)				1.750
Life Support Cost (monthly)				6.000
Total Tonnage and Cost			30	21.600.000

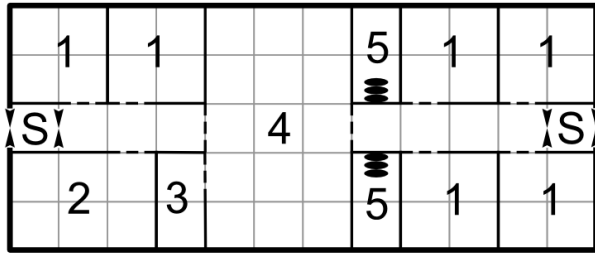
(* from Traveller Book 2: High Guard)

Self Defence Module 7.100.000Cr

Self Defence Module			Tonnen	Preis (Cr.)
Hull	30 tons			100.000
Elektronics	Military		2	1.000.000
Weapons	Hardpoint #1	Triple Pop-up Turret (empty)	2	2.000.000
	Hardpoint #2	Triple Pop-up Turret (empty)	2	2.000.000
Cargo	For ammunition		4	
2 Staterooms			8	1.000.000
12 Low Berths			6	600.000
Extras	Armory*		2	500.000
	Briefing Room*		4	500.000
Maintenance Cost (monthly)				592
Life Support Cost (monthly)				5.200
Total Tonnage and Cost			30	7.100.000

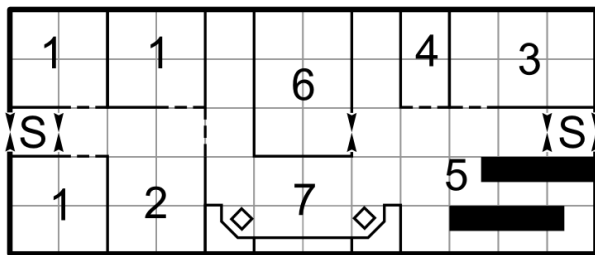
(* from Traveller Book 2: High Guard)

Passenger Module



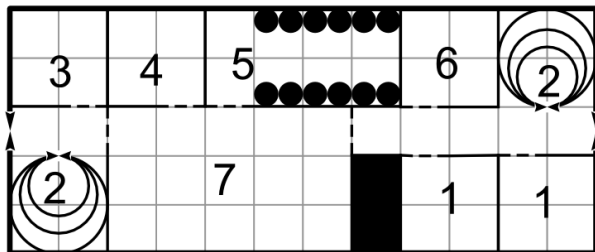
- 1 Stateroom
- 2 Cargo
- 3 Galley/Service
- 4 Common Area
- 5 Escape Pods
- S Air Lock

Sensor Module



- 1 Stateroom
- 2 Common Area
- 3 Laboratory
- 4 Drone Storage
- 5 Computers and Switchboards
- 6 Satellite Launch Room
- 7 Data Analysis Center
- S Air Lock

Self Defence Module



- 1 Stateroom
- 2 Turret
- 3 Ammunition
- 4 Armory
- 5 Low Berth
- 6 Common Area
- 7 Briefing Room